

FRVA'S 110TH INTERNATIONAL  
CONVENTION & RV EXPO

RETURN TO PERRY:

LAFITTE'S LOST TREASURE

*Confirmation Guide*

*March 12-15, 2025*  
*Perry, Georgia*

*Georgia National  
Fairgrounds & Agricenter*



**FAMILY RV**  
ASSOCIATION | EST 1963

# WELCOME TO PERRY



**Lisa & Paul Mitchell**

Congratulations on being part of Family RV Association's 110th International Convention & RV Expo. This booklet includes information to help you plan your trip to Perry and what to do when you arrive. Please read carefully, and we will look forward to seeing you there.

- To park the large number of RVs that attend an FRVA International Convention, parking must begin several days prior to the event. For this event, Welcome Bags will be distributed as attendees arrive.
- **Download the FMCA App**, read the program included in your Welcome Bag — or the electronic version at [FMCA.com](http://FMCA.com) — **and plan what you would like to see and do during the convention.**
- During the **"Return To Perry: Lafitte's Lost Treasure"** convention, on-grounds transportation using activity golf carts will be available for you to get from the parking lots to the activity areas and back (limited service on Monday, March 10; full service begins Tuesday, March 11). If you have a bicycle, we encourage you to bring it.

- On Wednesday, March 12, the RV Displays and Indoor Exhibits will be open from 1:00 pm to 5:00 pm, as participating exhibitors unveil their latest models and newest products. Take advantage of this opportunity to shop for whatever you need to make your RVing experience more enjoyable.

- **For your safety, please do not visit the exhibit areas during set-up days.** All exhibits will be open from 1:00 pm to 5:00 pm on Wednesday, March 12; 9:00 am to 5:00 pm on Thursday and Friday, March 13 and 14; and 9:00 am to 3:00 pm on Saturday, March 15.

If you still have questions, please call the FRVA events department at 800-543-3622. Safe travels, and we are eager to have our FRVA family reunited in Perry.

Paul Mitchell, F165576  
FRVA National President

## FRVA Mobile Event App

The **"Return To Perry: Lafitte's Lost Treasure"** convention is right around the corner, and we are preparing for an incredible event.

One of the best tools to help make for an enjoyable experience in Perry is the FRVA Mobile Event App. It's like having the convention program on your phone — but better. Not only can you find information for all the seminars and activities at the convention, but you can add them into your convention schedule in the app. You can also find exhibitors, entertainment information, important updates like schedule changes/weather, and so much more.

The app will be launched through our partner, Cvent Events, in late February. Registered attendees will receive an email with instructions about how to register and download the app through the App Store or Google Play. Keep an eye on your email inbox, and if you haven't already, follow us on Facebook.

## CHAPTER FAIR

**Tuesday, March 11, 2:45 pm**  
**Reaves Arena**  
**Following First-Timer's Orientation**

This is the perfect opportunity for you to visit one or more FRVA chapters all in one spot. See chapter displays and talk with enthusiastic members who will be happy to tell all about the fun of being part of a chapter. Ask questions and even join a chapter or two that you find interesting. You won't want to miss this chance to learn about FRVA's many chapters, so put the **"Lafitte's Lost Treasure"** Chapter Fair on your schedule.

If you are a chapter leader interested in participating, contact the Chapter Services Department by emailing [chapters@FRVA.com](mailto:chapters@FRVA.com). You will receive a confirmation email with more information about setup, etc.

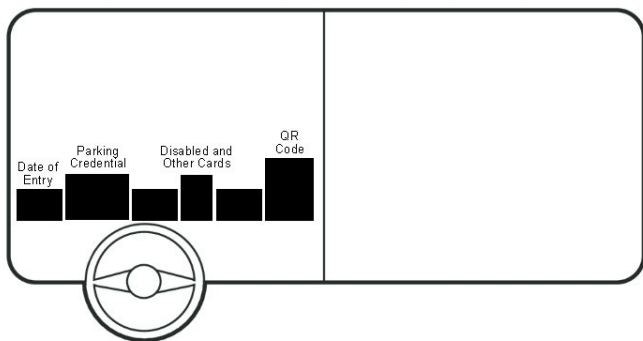
# FRVA International Convention Information

## ENCLOSED ITEMS

Enclosed are your registration materials, which include everything you need to arrive and be parked. Early event information, including seminar information, can be obtained by visiting [www.FRVA.com](http://www.FRVA.com) and viewing or downloading a digital edition of the event program.

### Windshield RV Parking Credentials

Enclosed in this packet are two separate parking credentials to display in the driver's side of your windshield when entering the grounds and at all times when parked. The larger card indicates the parking area and the type of service you requested (30-amp, 50-amp, general, full generator, no generator, etc.). The black-and-white card (Date of Entry) indicates the date you should arrive to be parked. Please place the credentials in your windshield in the order indicated below.



The credentials acknowledge your registration and aid the parking personnel who will guide you to the requested parking area. If you arrive early, you may dry camp in the Welcome Area or pay a \$40 fee per night to be parked early. If you decide to leave the grounds in your RV for any reason, you must display the window credentials to re-enter.

### Towed Car Credential

Display this credential on the rearview mirror of your towed or towing vehicle. When re-entering the grounds in your towed or towing vehicle, you must display the credential. For security purposes, please print your cell phone number, name, and member number on the credential.

### Name Badges

Name badges must be worn to gain admittance to the exhibit areas and all activities. There are spaces on the back of the badge to indicate emergency information and your RV location.

### First-Time Attendee Ribbons

If you indicated that this is your first International Convention, we have enclosed red First Time Attendee ribbons. These attach to your name badge holder so experienced attendees may welcome you and be available to answer your questions.

### International Convention Confirmation Guide

This guide includes a map and directions; emergency service information; International Convention Rules and Regulations; facts about Perry; and other information.

### Arrival Procedures

Follow the directions to your specific parking area indicated later in this booklet. The directions have been determined with the help of the local police so arriving RV traffic can be cleared off the highways as quickly as possible. The Welcome Area will be open starting at 8 am, Sunday, March 9. A member of FRVA's Parking Team will be on duty from 8 am until 5 pm. If you have a towed vehicle, you can unhook it off grounds and have your co-pilot or another member of your party drive it onto the grounds separately or it can be unhooked at the Welcome Area.

If you wish to park with friends, you must arrive together with appropriate admittance credentials or meet in the Welcome Area. Identify your party by placing a piece of white letter-size paper in the window of each RV. Using a heavy black marker, write the last name of one of the members of your group followed by the position each RV occupies in relation to the total number of RVs in the party (Smith 1 of 3; Smith 2 of 3; etc.). This will alert parking personnel that you wish to park together.

*Whether you park on pavement or on grass, we ask that you use wooden blocks or waffle pads under your levelers to keep from sinking the feet and/or damaging the pavement or camping area.*

### Welcome Bags

Welcome Bags will be distributed upon arrival and will include the event program and other materials.

### Departure Procedures

Departure will be on Sunday, March 16. Electric will be turned off at 9:00 am and all RVs should be off property by 12:00 pm. If you wish to stay longer, visit [www.gnfa.com/p/rvreservations](http://www.gnfa.com/p/rvreservations). Space is limited and you may be asked to move your RV.

### Family Emergency Contact Information

The FRVA Information Center number is (513) 909-1701. This number will be in operation beginning Saturday, March 8, at 8 am.

### Mail

If you plan to have mail forwarded to this event, it is very important that it be addressed as follows:

Member Name & Membership Number  
c/o FRVA  
Georgia National Fairgrounds & Agricenter  
401 Larry Walker Parkway  
Perry, GA 31069

### Packages sent by FedEx or UPS should be directed to:

Georgia National Fairgrounds & Agricenter  
c/o Hale Expo Services  
Member Name, Member Number, and Cell Number  
401 Larry Walker Parkway  
Perry, GA 31069

Mail will not be available for pickup until Wednesday, March 12. Mail not picked up from the Information Center by 3:00 pm Saturday, March 15, will be sent to FRVA National Headquarters in Cincinnati.

If you plan to pick up your mail at the post office in Perry, please have it addressed as follows:

Member Name  
General Delivery  
1400 Macon Road  
Perry, GA 31069

There are limited water and dumping facilities at the site; **therefore, please arrive with empty waste tanks and a full water tank.** Septic trucks will be available to empty holding tanks along with water trucks to fill water tanks. Check your program for information about these services.

The **Information Center/Registration Desk** located in the McGill Marketplace will be in operation Saturday through Saturday, March 8 through 15, 8:00 am to 5:00 pm.

**Will Call** will be located in the Welcome Area Sunday, March 9, through Tuesday, March 11, 8:00 am to 5:00 pm, and Wednesday, March 12, 8:00 am to 12:00 pm. Will Call will be relocated to the Information Center/Registration Desk in McGill Marketplace on Wednesday, March 12, at 12:00 pm, and remain there through the duration of the event.

# "Lafitte's Lost Treasure" Events Schedule

The Events listed on this page are tentative. Please check your program and the FRVA event app for exact days and times for these activities.

## Yo-Ho-Ho Hangout Open

Sun.-Sat., March 9-15, 8 am  
McGill Marketplace

## "Drop Anchor" Meet & Greet

Featuring John Mark Graves  
Mon., March 10, 6 pm  
McGill Marketplace

## Discover GNFA Guided Walkabout

Tues., March 11, 10 am to 2 pm  
Meet at the Clock Tower

## First-Timer's Orientation

Tues., March 11, 2 pm • Reaves Arena

## Chapter Fair

Tues., March 11, 2:45 pm • Reaves Arena

## "Welcome To Perry" Party

Tues., March 11, 5 pm • Downtown Perry

## Macon Sound

Tues., March 11, 6 pm • Downtown Perry

## Karaoke With A Keck

Tues.-Fri., March 11-14, 9 pm  
McGill Marketplace Receptions Area

## All Exhibits Open

Wed., 1-5 pm; Thurs, and Fri., 9 am-5 pm; Sat,  
9 am-3 pm • Miller-Murphy-Howard, Georgia  
Grown Building, RV Displays

## FRVA Trivia Challenge

Wed., Fri., Sat., March 12, 14, 15, 12 pm  
McGill Marketplace Receptions Area

## Opening Ceremonies

Wed., March 12, 7 pm • Reaves Arena

## The Andrews Brothers Dueling Pianos

Wed., March 12, 7:30 pm • Reaves Arena

## Roadmaster Morning Coffee Hour

Featuring The Frustrated Maestros  
Thurs., Fri., Sat., March 13-15, 8 am  
Kleen Tank Town Center

## Bean Bag Toss

Thurs, March 13, 10 am • Kleen Tank Town Center

## Wacko Products Ladies' Luncheon (ticketed event)

Thurs., March 13, 11:30 am  
McGill Marketplace Receptions Area

## Mike Fuller . . . The Magician

Thurs., March 13, 12 pm • Kleen Tank Town Center

## "Walk The Plank" Parade

Thurs., March 13, 5 pm  
GNFA Grounds to Kleen Tank Town Center

## "Shiver Me Timbers" Chapterfest

Thurs., March 13, 6 pm • Kleen Tank Town Center

## S&S Automotive Coach Division

"Buccaneer Boomfest" Fireworks  
Thurs., March 13, 7:45 pm • Kleen Tank Town  
Center

## Frustrated Maestros

Fri., March 14, 3 pm • Kleen Tank Town Center

## Miller Insurance Ice Cream Social

Fri., March 13, 3 pm • Kleen Tank Town Center

## Card Bingo

Fri., March 14, 4 pm  
McGill Marketplace Receptions Area

## Recognition Of Convention Volunteers

Fri., March 14, 7:15 pm • Reaves Arena

## DIVAS3

Fri., March 14, 7:30 pm • Reaves Arena

## Ladderball Tournament

Sat., March 15, 10 am • Kleen Tank Town Center

## FRVA Supersized Book Club

Sat., March 15, 1 pm  
Miller-Murphy-Howard Building, Sem. 1

## Driven To Care Donation Ceremony

Sat., March 15, 7:15 pm • Reaves Arena

## Tony Knight & Friends

Saturday, March 15, 7:30 pm • Reaves Arena

#FRVARV

## Share The Fun On Social Media

#FRVAGA25



### Facebook from a phone, computer

1. Log into Facebook.
2. If you have not already "liked" our page, search "FRVA RV Club" and follow us.
3. On your own profile, create a new post about your convention experience.
4. Type @FRVAfans in your post to tag our page
5. Make sure the post is set to "public" privacy settings so others can see it.

*The status update will post on your personal timeline and will link to FRVA's page.*

### Join our Facebook group for fellow attendees

1. Log into Facebook.
2. Search "FRVA RV Club" and open our page.
3. Select the "Groups" tab.
4. Click the "Join" button for "Perry Attendees – FRVA's 110th International Convention & RV Expo" group.



### Instagram from a phone or tablet

1. Log into your Instagram account
2. Create a post about your convention experience.
3. Tag us in the image @FRVARvclub or tag us by adding @FRVARvclub in your post caption
4. Tag your location: Georgia National Fair & Agricenter
5. Be sure to use the hashtags #FRVARV and #FRVAGA25
6. Share your photo or video



### X (formerly Twitter) from a phone, tablet, or computer

1. Log into X
2. Create a tweet about your convention experience and tag @FRVA\_ (be sure to include the underscore).
3. Include #FRVARV and #FRVAGA25 in your tweet.

*Tagging FRVA will link the tweet to our page and using the hashtags will make the tweets show up in the social stream on the Perry convention app*

# FRVA CONVENTION Rules And Regulations

1. Parking for registered attendees will take place from 8:00 am to 5:00 pm on Monday, and Tuesday, March 10 and 11; and 8:00 am to 12:00 pm on Wednesday, March 12. Non-registered attendees may register on site starting at 8:00 am, Sunday, March 9. Registration hours will be from 8:00 am to 5:00 pm on Sunday through Friday, March 9-14, and 8:00 am to 12:00 pm, on Saturday, March 15. If you arrive earlier than the date on your Arrival Card, go to the Welcome Area.
2. Parking spaces will be assigned at the discretion of the Parking Team. First arrivals may not necessarily be parked closer to the activity centers.
3. An adequate parking space is provided for RVs and towed vehicles. RVs, awnings, and equipment must fit within this space.
4. Follow the directions of the Parking Team and park only in allocated spaces. Improperly parked RVs and/or towed cars will be towed away at the owner's expense.
5. A special parking area will be provided for RVs that are towing trailers. But leaving trailers connected is not guaranteed.
6. Caravan or large groups coordinators must schedule an arrival time with FRVA's national office (call 800-543-3622). Caravan arrivals will be accepted Monday & Tuesday, March 10-11.
7. As the driver of your RV, you are solely responsible for its operation and movement as it is being parked. While Parking Team volunteers may direct or assist you while parking, it is your responsibility to avoid obstacles or situations that could lead to accidents and damage your RV or other's property. FRVA is not responsible for accidents or damage that occur while you are parking.
8. Electricity is available at an additional cost. Security will issue fines to anyone procuring electricity illegally, and may request the removal of the RV from the grounds.
9. Attendees may ride activity carts to all activities. Towed cars should not be used to travel to activity centers.
10. Security and safety personnel are responsible for the safety of attendees. Please obey their directions.
11. Please respect all event personnel and volunteers.
12. Pets are welcome but must be kept in the parking areas unless they provide service assistance. Pets are not allowed in the activity centers — seminars, entertainment, morning coffee hour, or exhibit areas. Be a responsible pet owner; clean up pet waste, prevent the pet from making excessive noise, keep it on a leash outside the RV, and do not allow it to relieve itself near RVs.
13. Scooters, Segways, bikes, and other two-wheeled vehicles are not permitted inside exhibit buildings, seminar rooms, and other areas restricted to pedestrian traffic. Wheelchairs and mobility carts are permitted in these areas. Your cooperation is appreciated.
14. The use of privately owned golf carts is permitted. The speed limit is 5 mph. Headlights must be used before dawn and after dusk. If your cart does not have operating headlights, it cannot be used in the dark.
15. Attendees must have valid insurance on all personal mobility carts and golf carts.
16. The Convention Committee reserves the right to ask violators of the above rules and regulations to leave the grounds.

## Service Information

Service is an important function at FRVA conventions, and many manufacturers and component suppliers provide limited service for attendees who are experiencing problems with their RVs. Please refer to the information below regarding emergency service. Do not ask for routine maintenance or for services that can be handled before leaving home.

At this event you will be able to sign up for service prior to arriving in Perry; on Wednesday, March 12 from 8:00 am to 12:00 pm at the Service Center in the McGill Marketplace; and on site at the service provider's vendor booth. A list of the service providers who have agreed to make pre-convention service appointments, along with their contact information, will be e-mailed to all registered attendees (and posted on FRVA.com) as the event nears.

In most cases, a service vehicle (van or golf cart) will be dispatched to your RV in the family parking area. Service will be performed at the discretion of the manufacturer, component supplier, or service firm. In most cases, non-warranty work will be charged.

### LIMITED ON-SITE "EMERGENCY" SERVICE (For Service Related To Health & Safety Issues)

#### FRVA will permit emergency service vehicles on-site beginning Monday, March 10

- Service during the main family parking days — Monday and Tuesday, March 10 and 11 — will be limited to emergency service.
- Emergency service is defined as any service to generators, refrigerators, air conditioners, heaters, and inverters that must be performed to assure the health and safety of members. Regular or preventive maintenance (example: changing oil or filters) or new installations are not considered emergency service.
- No new installations are permitted on RVs parked on-site in the family parking area prior to noon on Wednesday, March 12.
- Service vehicles offering emergency service must display a yellow "Emergency Service" credential on their vehicle.
- There is to be no selling of any product or service in the family parking areas. All sales transactions must be limited to assigned exhibit areas.
- Immediately notify FRVA Security or the FRVA Commercial Office, located in the Miller-Murphy-Howard Building, if vendors without proper credentials approach you regarding service in the family area.

# DIRECTIONS

## Georgia National Fairgrounds & Agricenter, Perry, GA

**NOTE: Although there may be shorter routes to the facility, please use the directions below, which have been developed for the safety of attendees and to minimize traffic tie-ups.**

**G**eneral parking for FRVA's 110th International Convention & RV Expo begins on Monday, March 10, at 8:00 am. Display your credentials in the windshield as indicated on the backs of the cards. Some groups will be asked to arrive before this date. Please arrive on the date indicated on your Date of Arrival Card found in your Confirmation Packet or on the email that was sent to you if you chose to have your Confirmation Packet held at Will Call.

### EARLY ARRIVING GROUPS

**Thursday, March 6** — National Officers; Member Staff Chiefs and Coordinators; Parking Team

**Friday, March 7** — Member Staff Teams, Welcome Volunteers

**Saturday, March 8** — RV Basics Students

**Sunday, March 9** — Activity Cart, Security, and Trams Volunteers; Frustrated Maestros

**Monday, March 10** — Coffee Hour, FRVA Store, Information, Mentors, and Seminars Volunteers; First-Time Attendees

The Welcome Area will open on Sunday, March 9. Please go there if you wish to meet and park with friends; if you requested your credentials be held at Will Call; if you arrive before the date on your admittance card; if you are arriving for the convention without a specific credential (Advance Crew, Volunteer, Disabled, or in a registered caravan); or if you are not pre-registered.

Parking hours are from 8:00 am to 5:00 pm Sunday, Monday, and Tuesday, March 9, 10, and 11. If you arrive before or after these hours, please go to the Welcome Area until the Parking Team resumes parking at 8:00 am. If arriving Wednesday, March 12 or later, proceed directly to the Welcome Area. If a parking attendant is not available, call 513-909-1701. DO NOT attempt to park without parking attendant assistance.

### WELCOME AREA/STAGING AREA/WILL CALL

**GATE A — GPS: 32°26'19.1"N 83°44'12.8"W**

**FROM FLORIDA (or the south):** Travel north on I-75 and take exit 135 (Perry/Marshallville). Turn right and proceed east on Larry Walker Parkway. Go past the North Entrance and the East Entrance and turn right onto Elko Rd. Turn right onto Starbuck Rd.

**FROM ATLANTA (or the north):** Travel south on I-75 and take exit 135 (Perry/Marshallville). Turn left and proceed east on Larry Walker Parkway. Go past the North Entrance and the East Entrance and turn right onto Elko Rd. Turn right onto Starbuck Rd.

### ALL FULL-HOOKUP PARKING (30-AMP & 50-AMP) FAMILY, DISABLED, VOLUNTEERS

**GATE A — GPS: 32°26'19.1"N 83°44'12.8"W**

**FROM FLORIDA (or the south):** Travel north on I-75 and take exit 135 (Perry/Marshallville). Turn right and proceed east on Larry Walker Parkway. Go past the North Entrance and the East Entrance and turn right onto Elko Rd. Turn right on Starbuck Rd.

**FROM ATLANTA (or the north):** Travel south on I-75 and take exit 135 (Perry/Marshallville). Turn left and proceed east on Larry Walker Parkway. Go past the North Entrance and the East Entrance and turn right onto Elko Rd. Turn right on Starbuck Rd.

### FAMILY PARKING — 30-AMP & 50-AMP ELECTRIC

**GATE B — GPS: 32°26'06.6"N 83°45'21.0"W**

**FROM FLORIDA (or the south):** Travel north on I-75 and take exit 134 (South Perry Parkway). Turn right and proceed east on South Perry Pkwy. Merge into the left lane and enter the South Entrance of the fairgrounds. Take an immediate left onto General Courtney Hodges Blvd. and follow to the entrance of the parking area.

**FROM ATLANTA (or the north):** Travel south on I-75 and take exit 134 (South Perry Parkway). Turn left and proceed east on South Perry Pkwy. Merge into the left lane and enter the South Entrance of the fairgrounds. Take an immediate left onto General Courtney Hodges Blvd. and follow to the entrance of the parking area.

### FAMILY PARKING — GENERAL, FULL GEN, NO GEN, EXTERNAL GEN; FRUSTRATED MAESTROS; COFFEE HOUR VOLUNTEERS; TYPE B MOTORHOMES

**GATE A — GPS: 32°26'19.1"N 83°44'12.8"W**

**FROM FLORIDA (or the south):** Travel north on I-75 and take exit 135 (Perry/Marshallville). Turn right and proceed east on Larry Walker Parkway. Go past the North Entrance and the East Entrance and turn right onto Elko Rd. Turn right onto Starbuck Rd.

**FROM ATLANTA (or the north):** Travel south on I-75 and take exit 135 (Perry/Marshallville). Turn left and proceed east on Larry Walker Parkway. Go past the North Entrance and the East Entrance and turn right onto Elko Rd. Turn right onto Starbuck Rd.

**DISABLED PARKING – GENERAL, 30-AMP & 50-AMP ELECTRIC, FULL GENERATOR, NO GENERATOR**

**GATE C — GPS: 32°26'37.9"N 83°44'56.8"W**

**FROM FLORIDA (or the south):** Travel north on I-75 and take exit 135 (Perry/Marshallville). Turn right and proceed east on Larry Walker Parkway. Turn right into the North Entrance and proceed to the parking area.

**FROM ATLANTA (or the north):** Travel south on I-75 and take exit 135 (Perry/Marshallville). Turn left and proceed east on Larry Walker Parkway. Turn right into the North Entrance and proceed to the parking area.

**VOLUNTEERS**

**GATE B — GPS: 32°26'06.6"N 83°45'21.0"W**

**FROM FLORIDA (or the south):** Travel north on I-75 and take exit 134 (South Perry Parkway). Turn right on South Perry Parkway, merge into the left-hand lane, and enter at the South Entrance. Proceed straight through the South Gate to the parking area.

**FROM ATLANTA (or the north):** Travel south on I-75 and take exit 134 (South Perry Parkway). Turn left on South Perry Parkway, merge into the left-hand lane, and enter at the South Entrance. Proceed straight through the South Gate to the parking area.

**EXECUTIVE BOARD, ADVANCE CREWS, PARKING TEAM**

**GATE B — GPS: 32°26'06.6"N 83°45'21.0"W**

**FROM FLORIDA (or the south):** Travel north on I-75 and take exit 134 (South Perry Parkway). Turn right on South Perry Parkway, merge into the left-hand lane, and enter at the South Entrance. Proceed straight through the South Gate to the parking area.

**FROM ATLANTA (or the north):** Travel south on I-75 and take exit 134 (South Perry Parkway). Turn left on South Perry Parkway, merge into the left-hand lane, and enter at the South Entrance. Proceed straight through the South Gate to the parking area.

**CARAVANS**

**GPS Coordinates — 32°26'09.5"N 83°44'12.6"W**

**FROM FLORIDA (or the south):** Travel north on I-75 and take exit 134 (South Perry Parkway exit). Turn right on South Perry Parkway, merge into the left-hand lane, pass the South Entrance and the Southeast Entrance and turn left onto Elko Rd. Turn left at the Caravans entrance.

**FROM ATLANTA (or the north):** Travel south on I-75 and take exit 134 (South Perry Parkway exit). Turn left on South Perry Parkway, merge into the left-hand lane, pass the South Entrance and the Southeast Entrance and turn left onto Elko Rd. Turn left at the Caravans entrance.

**EXHIBITORS**

**GPS Coordinates — 32°26'16.8"N 83°45'19.3"W**

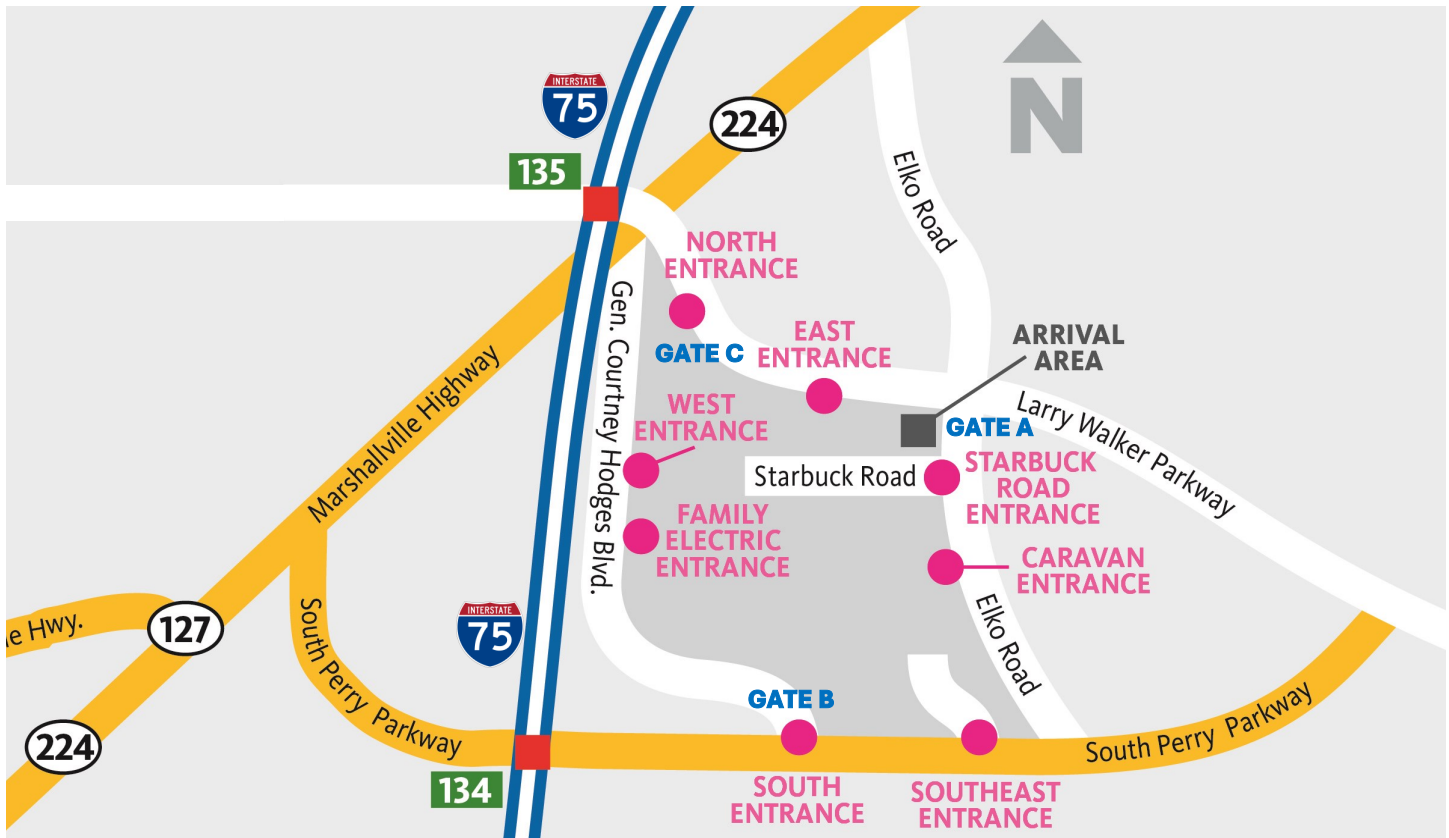
**FROM FLORIDA (or the south):** Travel north on I-75 and take exit 135 (Perry/Marshallville). Turn right and proceed east on Larry Walker Parkway. Turn right onto General Courtney Hodges Blvd. Turn left into the West Entrance of the fairgrounds. Follow signs to exhibitor registration at Miller-Murphy-Howard Building.

**FROM ATLANTA (or the north):** Travel south on I-75 and take exit 135 (Perry/Marshallville). Turn left and proceed east on Larry Walker Parkway. Turn right onto General Courtney Hodges Blvd. Turn left into the West Entrance of the fairgrounds. Follow signs to exhibitor registration at Miller-Murphy-Howard Building.

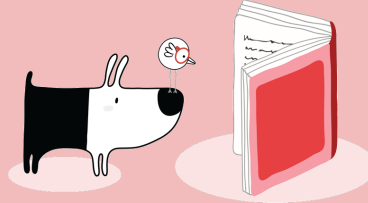
**PASSPORT, DAILY PASSPORT, DAY PASS CARS**

**GATE C — GPS: 32°26'37.9"N 83°44'56.8"W**

Take exit 135 (Perry/Marshallville), drive east on Larry Walker Parkway to the North Entrance, turn right into the grounds, and follow the signs for public parking.



# FMCA Supersized BOOK CLUB

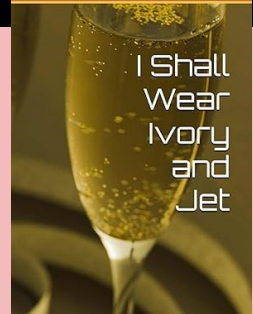


**Saturday, March 15, 1:00 pm**  
**Miller-Murphy-Howard Building, Seminar 1**

Louise Butler

FRVA is hosting its 12th Supersized Book Club during the “Lafitte’s Lost Treasure” convention. Attendees are invited to read *I Shall Wear Ivory and Jet* by Louise Butler. Louise will be in Perry to discuss the book, answer questions, and sign copies.

To join the “Lafitte’s Lost Treasure” Supersized Book Club, visit [join.FMCA.com/ga25bookclub](http://join.FMCA.com/ga25bookclub)



Louise Butler’s first book, *Beating the Bell Curve*, is a handbook for parents on how to look out for their own child’s education. Her second, *They Called Her Glorianna*, was a fictionalized biography of Elizabeth I of England. Butler followed that with *That Blaisdell Blood: a Novel*, folding the history of her mother’s family into the history of the nation and looking forward to the election of the first female President of the United States. *I Shall Wear Ivory and Jet* places readers in a room filled with the deceased wives of American Presidents sharing tea, gossip, reflections on life, and the men who brought them together.

## FRVA YOUTH ACTIVITIES

During the “**Lafitte’s Lost Treasure**” Convention FRVA’s Youth & Family Activities Committee will be presenting a variety of organized activities for kids and their guardians, beginning with a Meet and Greet on Tuesday, March 11.

All activities will be developed to include participation by the kids and their parents, grandparents, or guardians. This is not a babysitting service, and the adults must accompany the youth to these activities.

To participate in the Youth Activities Program, please visit [join.FMCA.com/ga25youthactivities](http://join.FMCA.com/ga25youthactivities) to register yourself and your kid(s). More information about the planned activities will be sent out once the schedule is completed.

For more information, contact Charlsanne Miskell at [FMCAyouth@gmail.com](mailto:FMCAyouth@gmail.com)



## SALUTE TO THOSE WHO SERVED



On Saturday, March 15, FRVA will recognize attendees who served as veterans and first responders.

To honor the men and women who have served to protect the freedoms we enjoy, along with current or retired police, fire, and EMS/EMT personnel who keep our loved ones safe and us safe. we will have a special pictorial “Salute To Service” presentation to honor these heroes prior to featured entertainment.

We encourage those who served to send us their name, branch (rank), or occupation, and a picture of themselves in uniform to be displayed on the big screen during the lead-up to entertainment. Go to [www.FMCA.com/FMCA-salute](http://www.FMCA.com/FMCA-salute) to enter your information and upload your image. Or send the info along with a photo (no originals, please) to: Salute To Service, 8291 Clough Pike, Cincinnati, OH 45244. **All submissions must be received by February 28, 2025.**





# DRIVEN TO CARE SILENT AUCTION

In Perry, FRVA's designated charity will be the The HALO Group, a non-profit vocational and life skills day program serving adults with developmental disabilities and autism. FRVA will conduct two major events to help raise money for this group. One is the Magic Mile Run/Walk (see information below). The second will be the Driven To Care Silent Auction.

Attendees can participate in a couple of ways. First, chapters, areas, exhibitors, and individuals are encouraged to put together a box, basket, or bag filled with items fellow RVers would love to have. Examples could be things for the RV, gift cards, packaged food and drink, etc. A basket for the ladies? Or maybe something for the guys? Be creative. The second way is by bidding on the donated items.

Bids will be taken Wednesday through Friday, from 8:00 am to 5:00 pm at the Information Center in McGill Marketplace. At 5:00 pm on Friday, bids will close. On Saturday, those with the winning bids will be contacted and must come to the Information Center to pay for and receive their item. As an added bonus, the entity whose donations sells for the highest amount will receive a special award.

We encourage all attendees to get involved as auction item providers or bidders (or both) to help this worthwhile cause.



Driven to *Care*



To register, contact the Events Department by calling (800) 543-3622; or register onsite at the Information Center (McGill Marketplace Building)

## RACE INFO

- When: Friday, March 14, at 8 am - Rain or Shine (Please arrive by 7:45 am).
- Will reschedule for Saturday in the event of severe weather.
- Where: Meet at the start line near the FRVA Town Center.
- Course distance will be approximately 1 mile.
- Bring your pets!
- Participants may walk, run, or ride on mobility scooters. No bicycles, golf carts, or other motorized vehicles will be allowed.

## REGISTRATION INFO

- \$10 per person.
- If you are walking as a couple or a group, please enter each person individually.
- All participants will receive a Magic Mile water bottle and participant packet.
- All proceeds will go to the Genesis Joy House.



**HALO = "Helping Achieve Life Outcomes" by "Having Agape Love for Others."**

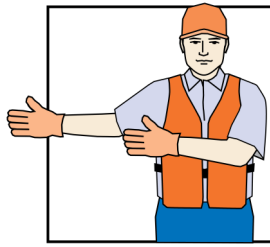
The HALO Group, founded in 2008, is a non-profit vocational and life skills day program serving adults with developmental disabilities and autism. HALO strives to assist those who are able to find equitable and viable employment within the community, offering continued job coaching in order to sustain employment.

The group has three Core Beliefs: All people are created in the image of God and are worthy of love, dignity, and respect. All people deserve to live a life of purpose and contribute to their community in a meaningful way. All people should have choices based on personal interests and abilities.

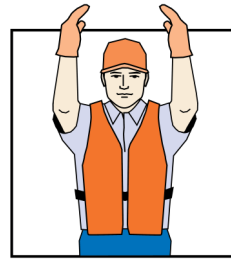
## BASIC PARKING SIGNALS

Parking at a convention can be a tricky endeavor with the number of families that attend the events. The basic parking signals shown to the right can help you park in a safe manner. These uniform signals will be used by Parking Team members to help direct you as you park.

These signals are usually given from the left rear of your RV. Never move the RV unless the parker is in plain view. When the parker leaves the preferred high-visibility left side of the RV to determine whether the other side is clearing, the STOP signal will be given. If at any time you do not understand the hand signal or additional directions are needed, wave your hand out the driver's window and signal the parker to approach for conversation.



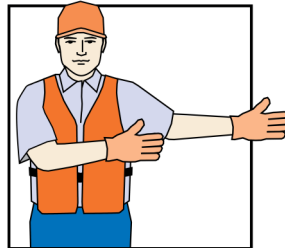
*Move rear of RV to the left, as seen in mirror.*



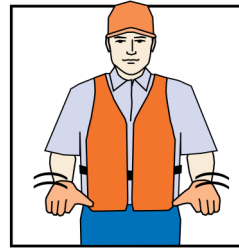
*Come straight back.*



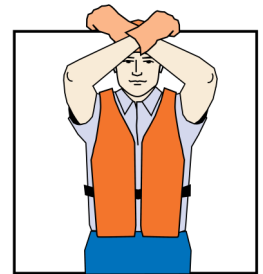
*Distance to go (palms apart indicating how far).*



*Move rear of RV to the right, as seen in mirror.*



*Slowly (when pumping palms down, like patting a dog).*



*Crossed forearms indicate STOP!*

## WARNING

### Exhaust Gas Is Deadly!

Exhaust gases contain carbon monoxide, an odorless and colorless gas that's formed during the combustion of hydrocarbon fuels. Carbon monoxide is poisonous and can cause unconsciousness and death. Symptoms of carbon monoxide poisoning include the following:

- Inability to think coherently
- Vomiting
- Muscular twitching
- Throbbing in the temples
- Dizziness
- Headache
- Weakness and sleepiness

If you or anyone else experiences any of these symptoms, shut down the generator; exit the immediate area (whether inside the motorhome or outside); and get into fresh air immediately. If the symptoms persist, seek medical attention immediately. Do not operate the generator again until it has been inspected and repaired.

The best protection against carbon monoxide inhalation is proper generator installation and frequent visual inspections of the complete exhaust system. Also, your RV should be equipped with a working carbon monoxide detector.

## Did You Know?

Many attendees bring motorized transportation to FRVA events to help move about the grounds. These golf carts, scooters, etc. are a wonderful convenience for those who are not as mobile as they used to be.

Using these vehicles in close proximity to pedestrian traffic poses increased risk of an accident for which the user may be found responsible. Many owners of these vehicles may not be aware that their insurance does not protect them in case of an accident. These vehicles may not be covered under homeowner or motor vehicle policies. Insurance companies may consider these types of vehicles as "recreational vehicles" or "motor vehicles" and require that they be separately insured. Individuals may be able to purchase insurance coverage for these vehicles with an attachment (called a "rider") to an existing insurance policy. Several companies will cover a small, single-seat electric scooter used to transport a disabled person under a homeowner policy.

For your protection, and the protection of other attendees at FRVA events, ask your insurance agent whether your vehicle is covered under an existing policy or requires additional coverage.

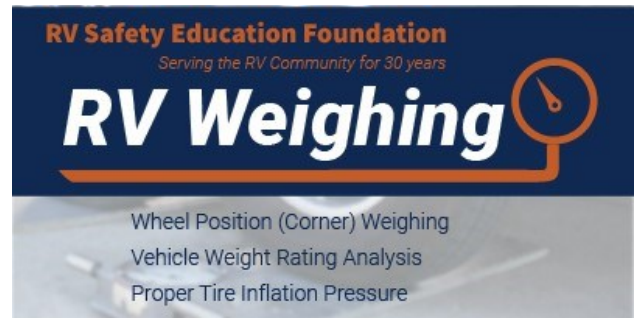
## CHECK-IN & LOCATION QR CODE CARD

During the “Return To Perry: Lafitte’s Lost Treasure” convention, FRVA will utilize a relatively new method of tracking where attendees are parked with our Check-In & Location QR Code Card that’s included in your Confirmation Packet.

Tape the Location QR Code Card that is specific to your registration in the lower left-hand corner of your motorhome’s or towing vehicle’s windshield so the code faces out. After you have parked, members of FRVA’s Parking Team will scan the QR Code Card, registering the location of your RV on site in the event FRVA personnel need to locate you.



Make sure to have this card visible in your windshield once you are parked. If you cannot find the QR Code Card in your Confirmation Packet, call the Events Department (800-543-3622) and your card will be printed and sent to you. Also, make sure the QR Card has your name and member number on it. If it does not, give us a call for a new card.



The RVSEF RV Weighing Service utilizes certified scales to determine individual wheel position loads. Owners complete a comprehensive worksheet that includes all critical weight and tire ratings. Scale readings and ratings are entered into a custom computer program that generates a weight analysis report, detailing safety margins on each component. Members receive a comprehensive report at the weighing site, including tire load/inflation tables. The cost of the service is \$70.

There is no charge for the education program titled “RV Weight & Tire Safety” presented by RVSEF. Check your program for day, time, and location.

**Sign up for RV weighing at the FRVA Information Center located in McGill Marketplace on Wednesday, March 12, 8:00 am to 12:00 pm, or during exhibit hours at the RV Safety & Education Foundation booth (303) in the Miller-Murphy-Howard Building.**

**Appointments are limited.**

## QUILTER’S AND CRAFTER’S CORNER

Below are Crafts and Topic Classes being presented at the “Lafitte’s Lost Treasure” convention. These classes are offered for an additional fee. Sign-ups begin on Wednesday, March 12, at 8:30 am in McGill Marketplace. Limited class sizes.

### CRICUT

**Instructor: Janell Allred (janellscraftstudiollc.com)**

- Cricut Advanced
- Cricut Basics
- Convention Mug
- Convention Travel Mug
- Key/Leash Holder (NEW)

### DIAMOND ART PAINTING

**Instructor: Lee Deal**

- Diamond Art Painting

### IDLE HANDS CREATIONS

**Instructor: Lynn Clugston**

- Seashell Ring Holder (NEW)

### FUN ART

**Instructor: Cora Newell, "Art On The Road"**

- A Walk Through The Hillside Painting (New)
- Colored Pencils On The Road
- Heron At The River Painting (New)

### JEWELRY

**Instructor: Katie Taddeo, Katie’s Design Studio**

- Deck The Bracelets (New)
- Double Luck Necklaces (New)
- Lady’s Pirate Bounty (New)
- Shell Treasure (New)

### SIGN PAINTING

**Instructor: Patricia Stuckwash**

- Southern Sip And Paint (NEW)

# Perry Fast Facts

For Emergencies, dial **911**.

Perry is located in **Houston County**. Surrounding counties include Dooly (south), Macon (west), Peach (northwest), Bibb (north), Twiggs (northeast), Bleckley (east), and Pulaski (southeast). Perry is approximately 15 miles south of Warner Robins; 27 miles south of Macon; 97 miles southeast of Atlanta; and 135 miles north of the Florida border. The area code is 478 and the zip code is 31069.

## U.S. Post Office

1400 Macon Road, Perry  
(478) 988-1251

## Perry Hospital | Houston Healthcare

1120 Morningside Drive, Perry  
(478) 987-3600

## Wes Park Family Dentistry

233 Wes Park Drive, Perry  
(478) 987-7863

## Perry Animal Hospital

633 General Courtney Hodges Blvd., Perry  
(478) 224-7387

**Weather broadcasts can be found on the following Perry area TV and radio stations:**

### Digital TV Stations

WPGA – 58 (ABC)	WMAZ – 13 (CBS)
WGXA – 24 (FOX)	WMGT – 41 (NBC)

### Radio Stations

WMUM – 89.7 FM	WNNG – 99.9 FM
WPWB – 90.5 FM	WNEX – 100.9 FM
WJTG – 91.3 FM	WAYS – 1500 AM
WPEZ – 93.7 FM	WDDO – 980 AM
WMGB – 95.1 FM	WMAC – 940 AM
WIBB – 97.9 FM	WZCH – 102.5 FM
WDEN – 99.1 FM	WQBZ – 106.3 FM

## Cancellation Requests

Refunds for this convention will be made only upon written request by emailing (cancel@fmca.com). Cancellations made by January 15, 2025, will receive a full refund minus \$25 handling fee. Cancellations made after January 15, 2025, but before March 12, 2025, will receive a full refund minus \$50 handling fee. Absolutely no refunds March 12, 2025, and after. Badges and confirmation materials must be returned to the FRVA home office before any refund is issued. **ELECTRIC REFUNDS: No refunds for electric service if cancelled on or after February 15, 2025**

## GROCERY, PHARMACY, LAUNDRY, AND MISCELLANEOUS SHOPPING

The information below is provided as a courtesy to attendees and is not an endorsement or recommendation by FRVA for the businesses indicated.

### Georgia National Fairgrounds & Agricenter

401 Larry Walker Parkway  
Perry, GA 31069

#### WALMART SUPERCENTER

1009 St. Patrick's Drive, Perry, GA 31069  
Store: (478) 987-1444 — Pharmacy: (478) 987-2323  
Hours: Store — 24 Hours; Pharmacy — Mon-Fri: 9:00 am to 9:00 pm;  
Sat: 9:00 am to 7:00 pm; Sun: 10:00 am to 6:00 pm

#### Directions From GNFA (Est. distance: 3 miles)

1. Go west on Larry Walker Parkway/Golden Isle Parkway
2. Merge onto I-75 N ramp to Macon
3. Take exit 136 for US-341/GA-7 toward Perry/Fort Valley
4. Keep right at the fork and turn onto GA-7 S/US 341 Sam Nunn Blvd.
5. Take the first left on Hampton Court. Walmart is straight ahead.

#### KROGER (Food and Drug)

1367 Sam Nunn Blvd., Perry, GA 31069  
Store: (478) 988-8474 — Pharmacy: (478) 988-8398  
Hours: Store — 6:00 am to 1:00 am; Pharmacy— Mon-Fri:  
9:00 am to 8:00 pm; Sat: 9:00 am to 6:00 pm; Sun: 11:00 am to 6:00 pm

#### Directions From GNFA (Est. distance: 3 miles)

1. Go west on Larry Walker Parkway/Golden Isle Parkway
2. Merge onto I-75 N ramp to Macon
3. Take exit 136 for US-341/GA-7 toward Perry/Fort Valley
4. Keep right at the fork and turn onto GA-7 S/US 341 Sam Nunn Blvd.
5. Travel to the second traffic light and Kroger will be on the right.

#### CVS (Food and Drug)

1100 Washington Street, Perry, GA 31069  
Store: (478) 987-0707  
Hours: Store — 8:00 am to 9:00 pm; Pharmacy — Mon-Fri:  
8:00 am to 9:00 pm; Sat: 9:00 am to 6:00 pm; Sun: 10:00 am to 6:00 pm

#### Directions From GNFA (Est. distance: 2.0 miles)

1. Go west on Larry Walker Parkway/Golden Isle Parkway
2. Turn right onto US-41 N/GA-7 N/GA-127 E/General Courtney Hodges Blvd.
3. Turn left onto Meeting Street.
4. CVS will be on the left.

#### WALGREENS (Food and Drug)

1100 Ball Street, Perry, GA 31069  
Store: (478) 987-1222  
Hours: Store — 8:00 am to 10:00 pm; Pharmacy — Mon-Fri:  
9:00 am to 7:00 pm; Sat: 9:00 am to 6:00 pm; Sun: 10:00 am to 6:00 pm

#### Directions From GNFA (Est. distance: 2.6 miles)

1. Go west on Larry Walker Parkway/Golden Isle Parkway
2. Turn right onto US-41 N/GA-7 N/GA-127 E/General Courtney Hodges Blvd.
3. Continue straight onto Commerce Street. Walgreens is on the left.

#### MAYTAG LAUNDRY (Coin Laundry)

1003 Swift Street, Perry, GA 31069  
Store: (478) 987-5865  
Hours: Mon-Sun: 7:30 am to 9:00 pm

#### Directions From GNFA (Est. distance: 2.4 miles)

1. Go west on Larry Walker Parkway/Golden Isles Parkway.
2. Turn right onto General Courtney Hodges Blvd.
3. Continue straight onto Commerce Street.
4. Turn left onto Macon Road.
5. Turn right onto Swift Street (Behind the Flash Food Store).